

THE  
CARING  
FAMILY  
FOUNDATION 

ANNUAL  
IMPACT REPORT  
2025





## INDEX

Message from our Founders .....	4
Acknowledgements .....	5
Our Mission .....	6
Our Impact 2025 .....	7
Project Funding & Grants .....	8
Domestic Abuse.....	10
Child Poverty .....	26
Reforestation & Restoration .....	36
Events .....	48
Partners & Supporters .....	50



## MESSAGE FROM OUR FOUNDERS

For Patricia and I, The Caring Family Foundation has always been deeply personal.

We established it in 2019 with a simple belief: that no child should go hungry, no woman should live in fear, and that we all share a responsibility to protect the world we leave behind. Seven years on, that belief remains unchanged. Our mission has always been to help build a world free from hunger, harm and hurt, where women and children can thrive.

The Foundation was born out of a desire to turn compassion into action. For us, philanthropy is about being present, listening carefully and responding where help is needed most. At its heart, the Foundation is about care, respect and action, but above all, it is about the individuals and families at the centre of our work. Behind every programme, every partnership and every achievement are people facing extraordinary challenges and working towards brighter futures.

Over the years, we have been humbled by those we have met and the stories they have shared with us. We have met women rebuilding their lives after abuse, parents doing everything possible to support their children, and communities working tirelessly to protect their land and environment. Their courage, resilience and determination have left a lasting impression on us, shaping not only the Foundation's work but also our own understanding of what meaningful change looks like. They remind us that this work has never been about numbers alone; it is about restoring dignity, creating opportunity and helping individuals and families build safer, stronger futures.

One of the most important lessons we have learned is that meaningful change is only possible through

collaboration. Lasting impact is never achieved by one organisation alone. It is made possible by exceptional people who share a commitment to making a difference and who dedicate their time, expertise, energy and compassion to supporting others.

We are fortunate to work alongside a dedicated team, expert partners, generous donors, committed supporters and volunteers who share our values and whose efforts help turn ambition into action every single day. Together, we are able to strengthen communities, expand opportunity and support work that delivers real and lasting progress.

We hope the pages ahead reflect the commitment and compassion of everyone involved in this work, but above all, the strength, resilience and determination of the people and communities we are honoured to stand beside.

We are proud of what has been achieved together and deeply grateful for the confidence placed in us. While much remains to be done, our commitment is unwavering. We will continue to play our part, working alongside others to help address some of society's most pressing challenges and contribute to a future where more women, children and families can flourish.

When people come together with shared purpose and determination, meaningful change becomes possible. Together, we can help build a world where every woman and child has the chance not only to survive, but to thrive.

**Richard & Patricia Caring**  
*Co-Founders of The Caring Family Foundation*



## ACKNOWLEDGEMENT

The Caring Family Foundation is built on the belief that meaningful change is only possible when we work together.

To every child whose life we are committed to protecting - you remain at the heart of everything we do. To every woman who has trusted us with her story - your courage and your voice continue to shape this work. To every Indigenous community - thank you for your leadership, your wisdom, and for allowing us to learn from your deep connection to the land.

While these pages cannot fully capture every partnership behind this work, we are deeply grateful to all those we stand alongside. Your care, commitment and leadership make this impact possible. We are honoured to work with Advance, Apna Haq Ltd, Associação Médicos da Floresta, Ecoporé, Everyone's Invited, Girls Human Rights Club, Home-Start Camden and Islington, Instituto Lia Esperança, Karma Nirvana, Latin American Women's Aid, Luminary Women, Panahghar, Refuge, Shining Stars, Solace Women's Aid, Success Club, SOS Amazônia, Surrey Square Primary School, Tender Education and Arts, The Angelou Centre, The Big Education Trust, The Felix Project, Women of Grace, and The Women's Aid Federation of England.

This work is made possible by a collective effort - one that continues to grow, evolve, and reach those who need it most.

**THE  
CARING  
FAMILY  
FOUNDATION**

## OUR MISSION

At The Caring Family Foundation, our mission is simple: to help build a world where women and children are safe, supported, and able to thrive.

Every day of the year, we work to make this a reality - providing meals to those who need them most and supporting women through trusted partnerships and community-led work.

We focus on practical, meaningful action that meets immediate needs while helping to create lasting change.



## OUR IMPACT 2025

### REFORESTATION



2,315,715

Trees and seedlings planted in the Amazon Rainforest

### DOMESTIC ABUSE



1,308

Women and children supported with domestic abuse services and interventions

### CHILD POVERTY



733,535

Meals delivered to families and communities

## OUR IMPACT TO DATE



5,796,795

Trees and seedlings planted in the Amazon Rainforest



141,000

Domestic abuse services provided, including helpline support



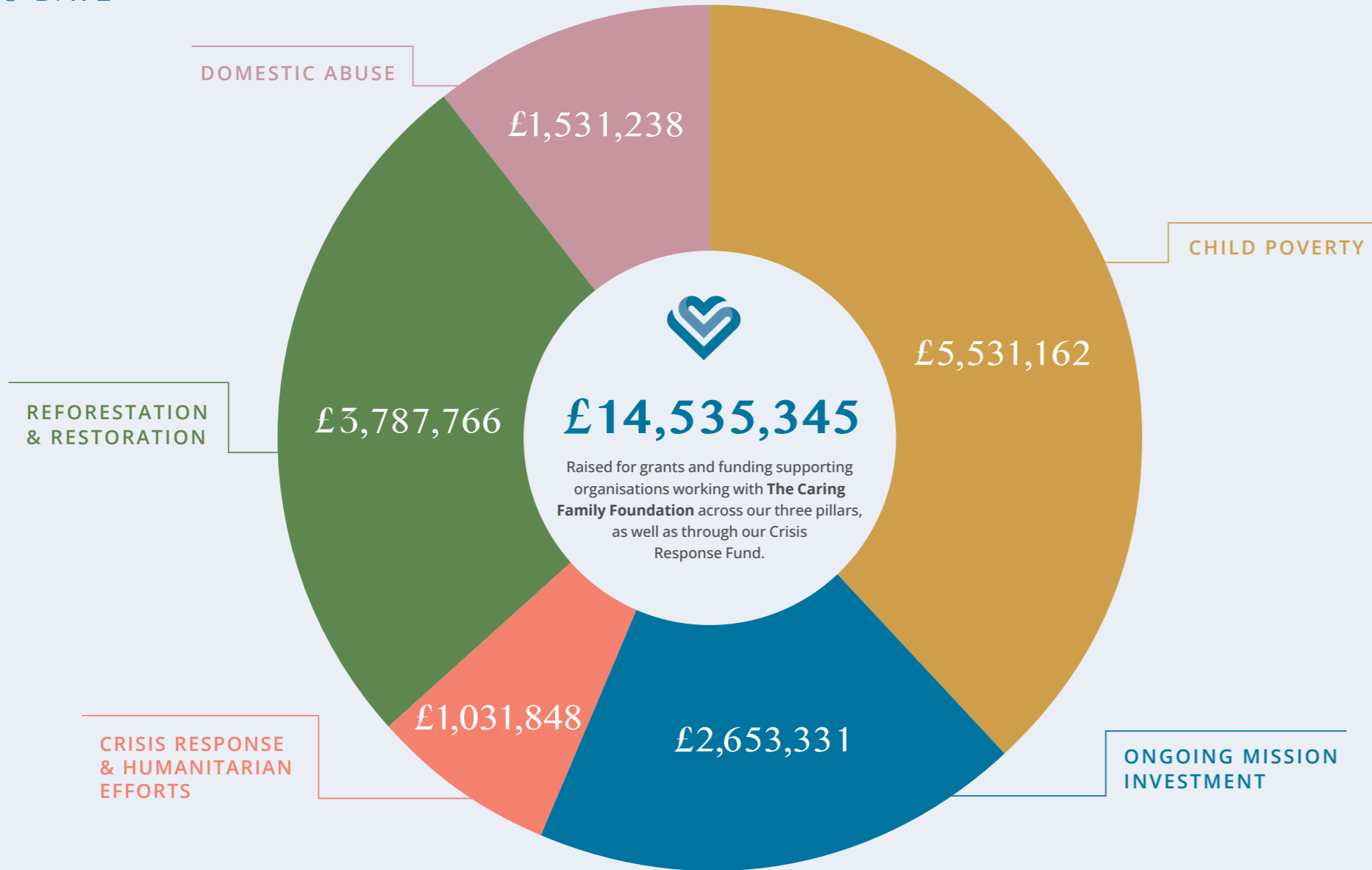
3,822,976

Meals delivered to families and communities

INVESTED IN OVER 100 GRANTS TO CHARITABLE PROJECTS

# PROJECT FUNDING AND GRANTS

TO DATE



# PROJECT FUNDING AND GRANTS

TO DATE



# DOMESTIC ABUSE

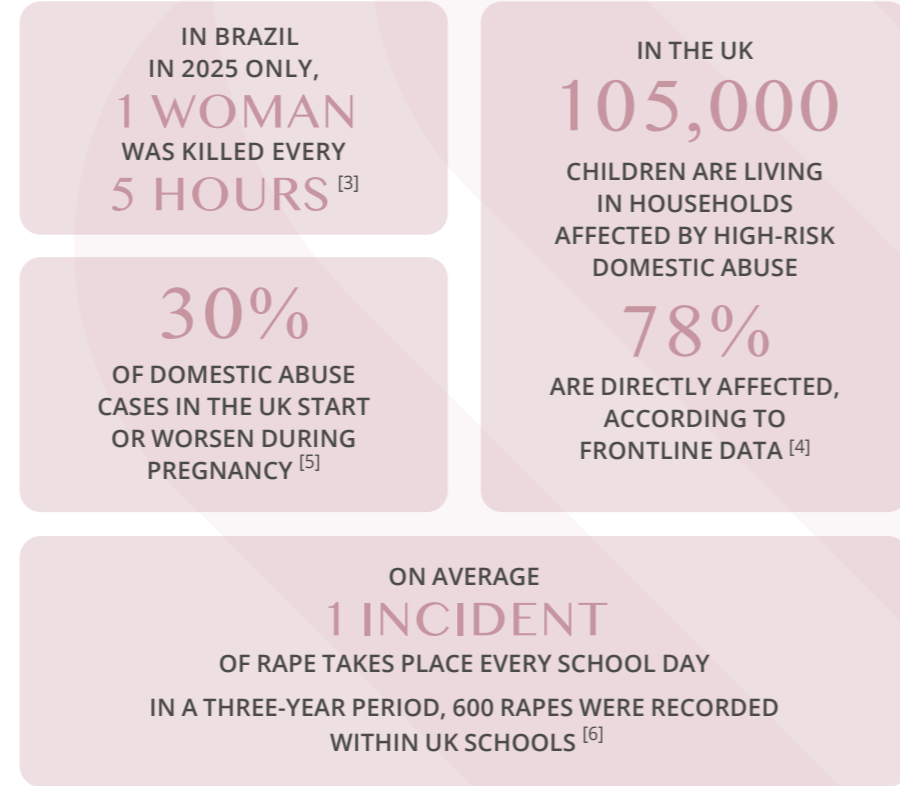
## CARING FOR WOMEN & CARING FOR CHILDREN

Domestic abuse remains a critical global challenge, affecting millions of women and children. In Brazil, an estimated **21 million**<sup>[1]</sup> women experienced violence in the past year, while in the UK, **a woman is killed by a man every three days**,<sup>[2]</sup> most often by someone known to her.

At The Caring Family Foundation, women and children are at the heart of our work. We work alongside women and children who experience domestic abuse, gender-based violence, and face socioeconomic barriers.

We take a comprehensive approach, funding work across domestic abuse prevention, crisis response, and longer-term recovery. We believe this is essential to addressing both **immediate risk and the lasting impact of abuse**.

- **Prevention:** We fund programmes that address the root causes of violence by working with children, young adults, educators, and communities to promote healthy relationships, gender equality, and respectful behaviour. We believe in giving them the tools they need to recognise harmful behaviour and prevent violence; reducing the likelihood of abuse before it occurs.
- **Crisis Support:** We support organisations providing immediate, trauma-informed specialist support to affected women and children. This includes access to helplines, safe accommodation, legal and healthcare services - helping individuals reach safety during periods of acute risk.
- **Transformation:** Our funding also enables continued support for survivors, beyond immediate crises support, including access to mental health services, skills development, and pathways towards economic stability. These interventions are designed to support sustained recovery and greater independence, helping to break the cycle of dependency, violence, and disadvantages.



[1] Fórum Brasileiro de Segurança Pública (2025), *Visible and Invisible: Victimization of Women in Brazil (5th edition) (Visível e Invisível: A Vitimização de Mulheres no Brasil)*  
 [2] Femicide Census (2022), *Femicide Census Annual Report*  
 [3] Fórum Brasileiro de Segurança Pública (2026), *Portrait of Femicides in Brazil (Retrato dos Femicídios no Brasil)*  
 [4] SafeLives (2023), *MARAC National Dataset*  
 [5] Women's Aid (2019), *Supporting women and babies after domestic abuse*  
 [6] UK House of Commons Women and Equalities Committee (2016), *Sexual harassment and sexual violence in schools*

## OUR IMPACT IN THE UK AND BRAZIL

### OUR IMPACT IN 2025



**42,913** instances of support provided to individuals experiencing domestic abuse in the UK, including helpline services

### OUR IMPACT TO DATE

**£1.5M**

IN PROJECT FUNDS AND GRANTS TO DOMESTIC ABUSE ORGANISATIONS IN THE UK AND BRAZIL



**141,000** domestic abuse services delivered in the UK and Brazil, including helpline support



**17,482** women and children supported directly in the UK and Brazil with domestic abuse interventions



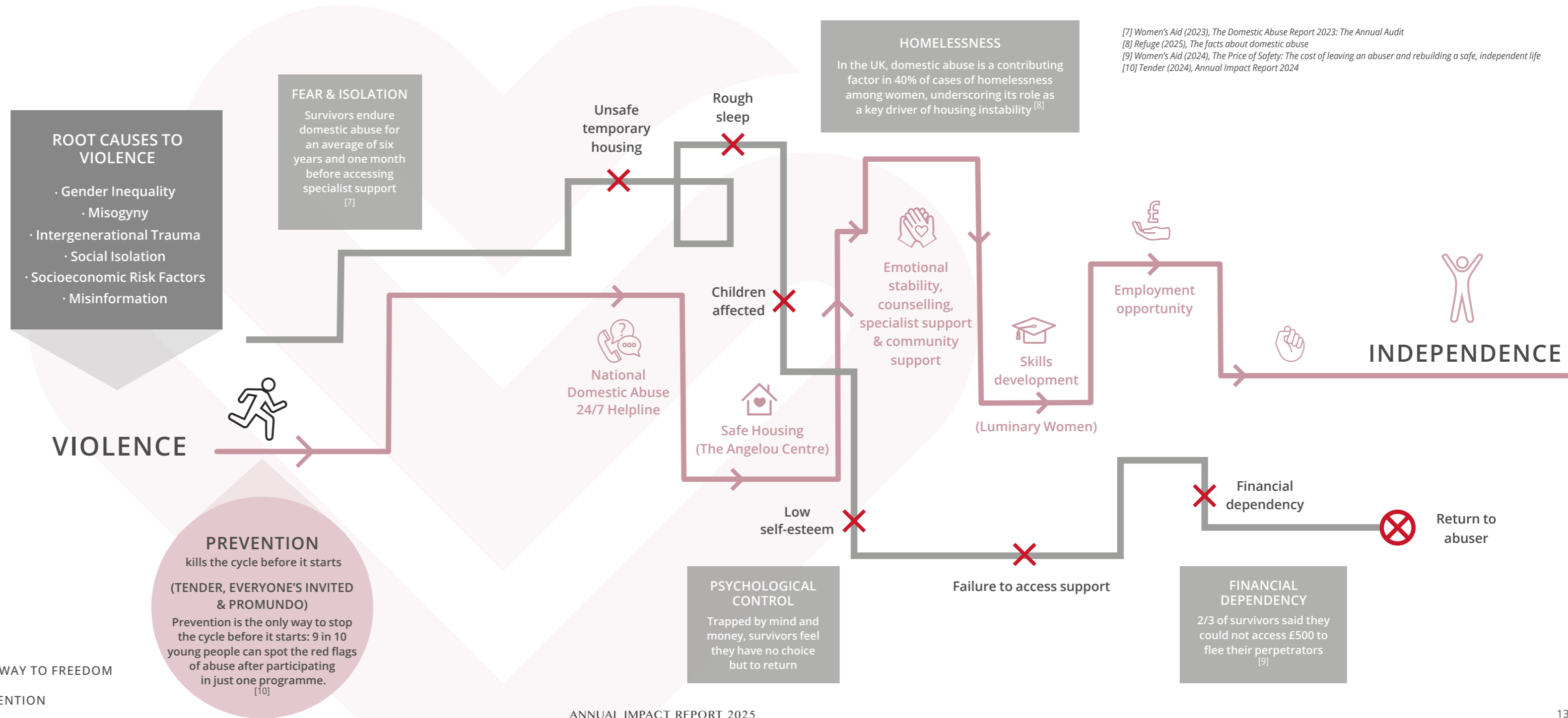
# A PATHWAY TO INDEPENDENCE

The Caring Family Foundation funds the critical services that create pathways to safety and stability. We recognise that every survivor's journey is unique and shaped by diverse experiences. Many face additional, systemic barriers.

This map is an indicative example of how specialist support can move a survivor closer to a life defined by her own choices.

Our aim is to empower every survivor to achieve safety, emotional resilience, and economic independence.

- RISK
- PATHWAY TO FREEDOM
- PREVENTION



[7] Women's Aid (2023), The Domestic Abuse Report 2023: The Annual Audit  
 [8] Refuge (2025), The facts about domestic abuse  
 [9] Women's Aid (2024), The Price of Safety: The cost of leaving an abuser and rebuilding a safe, independent life  
 [10] Tender (2024), Annual Impact Report 2024

## OUR WORK IN PREVENTION

After six years of dedicated work with women and children, our evidence is clear: **systemic prevention is the most powerful tool we have to dismantle the cycle of violence.** The Caring Family Foundation is evolving - moving beyond immediate relief to address the root causes of abuse and violence. By implementing early intervention within schools, we are countering the rise of digital exploitation and online misogyny, replacing vulnerability with the knowledge and resilience needed for a safer future.

At The Caring Family Foundation, we invest in prevention through specialist organisations that equip young people with the knowledge and confidence to recognise harmful behaviours, build respectful relationships, and make informed choices early on - creating environments where they feel empowered to speak up, challenge damaging behaviour, and seek support. Together, they contribute to a culture of respect and equality over time, reflecting our commitment to long-term, preventative change.

### TENDER EDUCATION & ARTS

Through our support of Tender, a charity that harnesses the power of drama and the arts to teach healthy relationships and respect, we fund the delivery of Healthy Relationships Projects in primary and secondary schools across some of East London's most deprived boroughs, including Tower Hamlets, Newham and Barking & Dagenham.

These sessions use drama-based exercises, script-work and role-play scenarios to help young people explore healthy relationships and develop the skills needed to recognise and respond to abuse. The programme will reach 600 children, supporting the development of attitudes and behaviours grounded in respect and equality.

### EVERYONE'S INVITED

Our grant to Everyone's Invited, a charity working to end rape culture through education and awareness, supports the delivery of preventative education programmes in schools using a whole-school approach. We are investing in a year-long intervention in Tower Hamlets that reaches 1,000 students and over 600 staff and parents, fostering a collective front against rape culture.

These programmes address key issues including online misogyny, digital literacy, and peer-on-peer abuse, equipping students, staff, and parents with the knowledge to identify and challenge harmful behaviours.

### PROMUNDO

In Brazil, our partnership with Promundo, which works to transform harmful social norms and prevent gender-based violence, drives programmes that tackle the root causes of systemic inequalities.

This work trains professionals across social services, education, and healthcare, while delivering community-based interventions that reach over 1,500 people each month through Program M.

These programmes aim to strengthen protective factors and reduce the risk of violence over time, particularly by addressing the underlying drivers of inequality.



# 1,355

PEOPLE TOOK PART IN EDUCATION PROGRAMMES ON HEALTHY RELATIONSHIPS AND RECOGNISING HARMFUL BEHAVIOURS, INCLUDING 484 CHILDREN WHO PARTICIPATED DIRECTLY IN WORKSHOPS

# 95%

OF STUDENTS WERE ABLE TO CORRECTLY IDENTIFY EXAMPLES OF HEALTHY BOUNDARIES, COMPARED TO 17% PRIOR TO THE PROGRAMME <sup>[9]</sup>

# 80%

OF STUDENTS REPORTED INCREASED EMPATHY AND EMOTIONAL AWARENESS AFTER PARTICIPATING IN THE PROGRAMME

## OUR WORK IN CRISIS SUPPORT

In cases of domestic abuse, timely and accessible support is critical. Through our funding, we support specialist organisations providing essential services to women and children in a moment of crisis, including 24-hour helplines, safe accommodation, and immediate financial assistance.

We partner with frontline organisations to ensure support is available at the moment it is needed, recognising that access to immediate, expert-led intervention can be life-changing and, in some cases, life-saving.

### REFUGE NATIONAL DOMESTIC ABUSE HELPLINE

As part of our continued commitment since 2023, The Caring Family Foundation has supported **Refuge's National Domestic Abuse Helpline**, a vital service for women experiencing domestic abuse, providing confidential and specialist support.

For many, this is the first point of contact and often a critical step towards safety. The helpline provides safe, trusted support via phone, LiveChat, and British Sign Language services - offering guidance on safety planning, housing options, and accessing further support.

Demand for these services continues to exceed available capacity, with the number seeking support far outpacing the resources available to respond. This growing pressure underscores the critical importance of continued funding. Without it, many women risk being left without access to vital support at the moment they need it most.

*"Refuge is very grateful to The Caring Family Foundation for their continued support. Their generous donation has helped fund our National Domestic Abuse Helpline - a vital 24/7 service for survivors. Funding helped ensure that every call was answered by trained, compassionate Advisors. Together, we reached survivors during some of the most difficult moments of their lives, providing safety, guidance and reassurance. Thank you!"*

**Gemma Sherrington**, CEO, Refuge

174,562  
CONTACTS

TO THE DA HELPLINE  
(MARCH 2024 – MARCH 2025) <sup>[11]</sup>

RESULTING IN A CRITICAL GAP THAT LEAVES THOUSANDS OF LIVES AT RISK

42,200  
PEOPLE

RECEIVED SUPPORT FROM  
TRAINED HELPLINE ADVISORS

3,958  
SURVIVORS

WERE REFERRED TO REFUGE  
ACCOMMODATION OR OTHER  
SPECIALIST SERVICES DUE TO  
HIGH RISK, INCLUDING RISK OF  
HOMELESSNESS OR ONGOING  
HARM

69%

OF THOSE SUPPORTED  
RECEIVED INFORMATION  
ON SAFETY PLANNING AND  
UNDERSTANDING ABUSE

[11] Office for National Statistics (2025), Domestic abuse victim services, England and Wales

## LISA'S STORY HELPLINE SUPPORT

Lisa's year-long relationship was defined by a devastating cycle of emotional, physical, and financial abuse. Lisa contacted the **National Domestic Abuse Helpline** and disclosed a history of abuse and stalking by a former partner, who was later charged following a serious physical assault.

”

*As well as preventing me from using my phone, he was physically violent. He would burn my skin with his cigarettes when he said I'd "done something to deserve it", he was manipulative and financially controlling. He didn't like the fact that I was close with my family and would try and stop me from seeing them. He would say he was 'jealous' but I know this was a means to isolate and control me. He stopped me from seeing friends and going out, even to the bar next to work. If I even looked at a man in the face, I knew there would be consequences. (...) My experience from Refuge is simply put that the services provided saved my life. To me it's a remarkable organisation that I believe is so vital in this world. I don't wish for anyone to go a day without being able to have access to resources such as Refuge, it's too important to ever disregard.*

**Lisa** (name changed to protect survivor's anonymity)



## OUR WORK IN CRISIS SUPPORT

### THE ANGELOU CENTRE

The Caring Family Foundation strengthens **The Angelou Centre**, a specialist provider of culturally responsive services for women experiencing domestic abuse, ensuring access to a vital support hub in the North East of England.

Throughout 2025 and into the current year, our funding has provided **four dedicated refuge spaces** for women with no recourse to public funds. Delivering multi-layered support for survivors and their children, this work integrates **specialist mental health care with practical advocacy, from legal protection to language and employability skills** - ensuring women facing the most complex barriers are never left to navigate recovery alone.

**Without this work, many women would be left with no viable escape route, forced to remain in harm's way due to a lack of alternative pathways to safety.** By funding these services, we help ensure that more women, particularly those who may otherwise be underserved - can access safe, appropriate, and effective support.

”

*The partnership with the Caring Family Foundation has evolved both in depth and responsiveness. Because The Caring Family Foundation listened to what the women and children told us they needed.*

*For example, we did not have a move-on accommodation for mums that were here with their children. We only had move-on accommodation for single women. And, The Caring Family Foundation listened. And now with this new grant, we are able to open our first move-on accommodation.*

Faty Kane, Executive Director, The Angelou Centre



Naomi, Survivor with The Angelou Centre

## NAOMI'S STORY

Naomi experienced domestic abuse which escalated over time, affecting both her and her children. She endured physical and sexual violence within her relationship, but through support services delivered by **The Angelou Centre**, and funded by The Caring Family Foundation, Naomi was able to access specialist, wraparound support.

This included safe accommodation, counselling, and practical guidance to help her begin rebuilding her independence. She also found a supportive community where she felt heard and understood.

Today, she is moving towards greater stability, having secured employment and a home for her family - reflecting the longer-term impact of sustained, specialist support and the importance of continued investment in recovery.

”

*It means a great deal to know that organisations like The Caring Family Foundation chose to invest in women's safety and future. It shows that our lives matter and that we have the opportunity to fulfil our potential. Support like this does not just provide services; it restores dignity, safety, and hope. I feel happy, more and above everything, I feel safe. I feel my children are safe, I feel confident, and I feel that I can keep on fighting because I know I have support... that smile, that tap on the shoulder that says everything will be okay. I am the living proof that when women are supported, they can rebuild and thrive.*

*I tell women that are in this situation still, that they don't have to go through this. (..). They are people that deserve safety, and they don't have to put up with that, that there are people that care. There are people that will listen, there are people that won't judge. I tell them there's a foundation called The Caring Family Foundation, and they fight for women like us.*

## OUR WORK IN CRISIS SUPPORT

### SOLACE

Through our engagement with **Solace**, an organisation delivering refuge and specialist support for women and children escaping abuse, we provide targeted financial support to women and children at a critical point in their journey - as they enter refuge or move on to independent living.

This support enables access to **essential items, from food and clothing to baby equipment and vital household goods**, ensuring that women, including those who are pregnant or caring for young children up to the age of 5, can meet their most immediate needs.

For some families, the challenges are more complex. Women are caring for children with additional needs, developmental differences, or ongoing health conditions, where the right equipment and environment are essential to daily life. From sensory toys that support regulation, to specialist items that allow children to rest, play, or move safely, this support helped mothers respond to their children's needs with greater confidence and care.

At a moment when many have fled with nothing, this support is often the difference between instability and safety, helping families begin to rebuild their lives with dignity. The impact was tangible: the grants awarded directly to women have significantly improved their financial security and emotional wellbeing, positively impacting their parenting and engagement with support services.

”

*Receiving this grant has been truly life-changing for me. After escaping domestic abuse, I had to start over completely, from the ground up. This support has played a vital role in helping me settle into my new home and begin rebuilding my life in safety and stability.*

**Sophie**

(name changed to protect survivors anonymity)

”

*What I find so inspirational about The Caring Family Foundation is seeing how it is going from strength to strength in terms of what its work is doing internationally and here in the UK to help so many women and children who are victims of domestic abuse and the kind of personal relationships that are being built between the Foundation and so many vital services that transform lives.*

**Dame Nicole Jacobs**

UK Domestic Abuse Commissioner



# TRANSFORMATION

## THE PATH TO INDEPENDENCE

Recovery does not end when a survivor reaches safety. We recognise that long-term support is essential to rebuilding stability and enabling future opportunities. This ongoing commitment is essential to help women rebuild their lives, develop practical skills, and regain a sense of security over time.

This stage often involves addressing the lasting economic and psychological impact of abuse, including barriers to employment, financial security, and confidence. Through The Caring Family Foundation's continued support and investment in skills development, women are better able to access opportunities, build resilience, and regain a sense of control over their future - moving beyond survival towards long-term independence.

### LUMINARY WOMEN

Through our funding, we support **Luminary Women** in London, a women-led charity that uses baking and hospitality training as a pathway to support women who have experienced multiple disadvantages, including domestic abuse and homelessness.

Our collaboration delivers a structured, multi-year programme for women that combines practical skills development with wider support, including financial literacy, confidence-building, and access to professional qualifications and work experience. Women are supported within a safe, community-based environment where they can build stability and develop the skills needed for employment.

In addition to technical training, the programme provides access to mental health support and ongoing guidance, recognising the longer-term impact of trauma and the importance of sustained support.

Through this approach, women are supported to gain practical experience, build confidence, and move towards long-term financial independence and employment.

IT COULD COST A SURVIVOR ALMOST

**£50,000**

TO REBUILD STABILITY AFTER LEAVING AN ABUSIVE ENVIRONMENT

IN THE BEST-CASE SCENARIO, A SURVIVOR COULD STILL FACE A

**£10,000**

AVERAGE FINANCIAL SHORTFALL FACED BY WOMEN TRANSITIONING OUT OF REFUGE ACCOMMODATION <sup>[12]</sup>

THIS IS WHY WE PRIORITISE ECONOMIC EMPOWERMENT AS THE CATALYST FOR LONG-TERM SKILL DEVELOPMENT

**100%** OF WOMEN IN THE LUMINARY PROGRAMME REPORTED SOME OR A LOT OF PROGRESS IN:

BAKING SKILLS

CONFIDENCE

COMMUNICATION

EMOTIONAL RESILIENCE

BUILDING RELATIONSHIPS

SELF-AWARENESS

## MARIA'S STORY

”

*When I first joined Luminary, I was at a point in my life where I needed structure, purpose and belief - both in others and in myself. I had been through a lot, and like many other women, was rebuilding my confidence step by step. What really draws me to Luminary is that it's not just about baking, it's about people. It's about learning new skills, being supported without judgement and being treated like you matter. For me, it's felt like a place I could safely grow again.*

*The most useful part of Luminary for me is how practical and supportive it is at the same time. From the start, we were each assigned a 1:1 key worker who then stays with us for the whole two years. Professional baking and kitchen skills have really been important to me - it has helped me to understand what it means to work to a professional standard. There is a real sense of pride that comes from creating something properly and knowing you have done it well. Getting to take our bake home to share with friends and family was also a yummy added bonus.*

*Another huge part for me has been confidence building. Through Luminary, I've had access to 16 weeks 1:1 therapy, in person, which I've recently just completed. That support has made a massive difference. It has helped me to understand myself better, manage my anxiety and believe that I am capable - not just in work but in my day-to-day life.*

*Right now, I am stepping into Phase 2, along with all the other graduates from Phase 1. We are a community growing together - building CVs, gaining work experience, and boosting each other's confidence. This phase is more than just skills; it's about supporting each other and growing holistically as a team.*

*Being part of Luminary has helped me think about what I want long-term. Not just as a job but for stability, purpose, and to help others.*

**Maria** (name changed to protect survivor's anonymity)



[12] Women's Aid (2024), *The Price of Safety: The cost of leaving an abuser and rebuilding a safe, independent life*



Clara Hadassah, Young Ambassador, 11 years old

## DOMESTIC ABUSE 2025 DEFINING MOMENT

### INTERNATIONAL DAY OF THE GIRL BRAZIL

We were immensely proud to secure the official recognition of the **International Day of the Girl** on **Brazil's national calendar**, marking this historic milestone with a landmark ceremony in the Plenary of the Chamber of Deputies in Brasília. Although this day has been celebrated globally since 2012, it had never before been formally recognised in Brazil. Through the dedicated leadership and vision of The Caring Family Foundation and our partners, we ensured this day was no longer ignored.

This recognition represents more than a date on a calendar; it is a vital safeguard for the **30 million girls across Brazil**. In a time of escalating crisis, where violence and inequality remain pervasive, it has never been more critical to institutionalise the rights of girls and amplify their voices. This official act signals the beginning of a **national movement dedicated to championing the safety, empowerment, and dignity of every girl in the country**.

The ceremony brought together influential leaders, girls' rights activists, law-makers, judges and advocates. Most importantly, it provided a platform for girls to share their lived experiences, ensuring that those at the heart of this movement are the ones leading the conversation. By securing this date, we have ignited a future where every girl is safe, valued, and free to become whoever she chooses to be.



*Today we celebrate our strength, our value and the incredible future we are building together. We are many - and we can transform our country. [...] I dream of a day when every girl has the voice, the opportunity and the chance to be whatever she wants to be.[...] Girls and boys will walk side by side, with equal respect, equal rights and equal opportunities.*



Clara Hadassah, Young Ambassador, 11 years old



# CHILD POVERTY

## CARING FOR CHILD HUNGER

At The Caring Family Foundation, we recognise that child poverty and food insecurity remain significant and growing challenges in both the UK and Brazil.

Through our funding, we support organisations providing healthy, nutritious meals to children and families who need them most. Alongside addressing immediate need, this support helps reduce financial pressure on families and provides greater stability for parents and caregivers.

Our focus is on equipping community leaders with the resources to thrive. In 2025, we expanded this work through **£294,054** in grants to partners including **The Felix Project, Home-Start, Shining Stars,** and **Success Club,** while continuing our support for **Surrey Square Primary School** and **The Big Education Trust.** These partnerships extend beyond food provision, supporting cooking programmes, youth clubs, and community markets that strengthen local support systems.

- **Food from the Heart:** Food insecurity remains a central focus of our work, and our Food from the Heart campaign has delivered over **3.8 million meals** since its launch.
- **Food waste and food redistribution:** By funding **The Felix Project,** London's largest food redistribution charity, we act as a key enabler in their mission to rescue surplus food and tackle food insecurity. In 2025, our support provided the fresh produce, vital transport and logistics needed to reach the heart of local communities, contributing to the delivery of **44 million meals** and the redistribution of food across London.
- **Direct work with schools and local organisations:** We also work directly with schools and local organisations, including **Surrey Square Primary School** and **Home-Start Camden,** to help ensure that healthy food reaches families most in need. This includes addressing gaps during school holidays and supporting year-round access to nutritious meals for children.

[13] UNICEF (2025), *Multidimensional poverty in childhood and adolescence in Brazil (2017–2023)* (Pobreza multidimensional na infância e adolescência no Brasil de 2017 a 2023)  
 [14] The Food Foundation (2025), *New data shows one in seven households with children struggling to afford food*  
 [15] Child Poverty Action Group (2025), *Child poverty statistics – new record high and further breakdowns*  
 [16] Trust for London (2025), *Child poverty in London*  
 [17] Department for Work and Pensions (2025), *Child poverty strategy (UK Government)*

## OUR IMPACT IN THE UK AND BRAZIL

### OUR IMPACT IN 2025



**733,535**

**MEALS**  
delivered to children and adults in the UK and Brazil



**100+**

Distributed across 100 different locations, including schools and community organisations working with children and families at risk across London

### OUR IMPACT TO DATE

**£5.5M**

IN PROJECT FUNDS AND GRANTS TO CHILD POVERTY PROJECTS ACROSS THE UK AND BRAZIL



**3,822,976**

**MEALS**  
delivered in the UK and Brazil



**66,000**

children and adults supported through our “Food from the Heart” campaign

**9.8M**  
CHILDREN IN BRAZIL LIVE IN EXTREME MULTIDIMENSIONAL POVERTY, FACING SEVERE DEPRIVATION IN AREAS SUCH AS EDUCATION, HOUSING, FOOD, WATER AND SANITATION [13]

**1 IN 7**  
HOUSEHOLDS WITH CHILDREN IN THE UK ARE STRUGGLING TO AFFORD FOOD - EQUIVALENT TO AROUND 1.2 MILLION FAMILIES [14]

**4.5M**  
CHILDREN ARE GROWING UP IN POVERTY IN THE UK, APPROXIMATELY [15]

**700,000**  
ARE IN LONDON ONLY, DESPITE LIVING IN ONE OF THE MOST DEVELOPED CITIES IN THE WORLD [16]

**The consequences of child poverty are profound and long-lasting.**

Children growing up in poverty face significantly **higher risks of poor physical and mental health, lower educational attainment, reduced employment prospects and earnings in adulthood, and increased vulnerability to homelessness.**[17]

## OUR WORK IN CHILD POVERTY IN THE UK

### THE FELIX PROJECT

We act as a driving force in the rescue and redirection of high-quality fresh produce through our involvement with **The Felix Project**. By bridging the gap between food waste and the 700,000 children in London facing hunger, our funding ensures that surplus food becomes a vital source of nutrition.

Our support is focused on providing the practical infrastructure needed to move surplus food into the heart of communities. In early 2025, we funded the delivery of **one million meals** to mark **World Hunger Day**. This grant supported the logistics required to provide balanced nutrition to nearly **130,000 individuals** and prevented over **5,000 tonnes** of food from going to waste. To strengthen this work, we also funded two co-branded vans, which rescued over **215 tonnes of food** in their first four months, contributing to reduced emissions across London.

We believe in directing resources where the need is most acute. In September 2025, we launched a targeted funding programme in Tower Hamlets - the London borough with the highest rate of child poverty (47%). By providing the resources for year-round food delivery to 16 schools and community hubs, we are ensuring a consistent safety net for families in East London.

### SURREY SQUARE PRIMARY SCHOOL

Our partnership with **Surrey Square Primary School** centres on the Old Kent Road Family Zone, a community hub where we use food as a vital cornerstone for family wellbeing. By leading with this support, we are able to strengthen local connections and provide families with a sense of security and belonging.

In 2025, our funding facilitated the delivery of nutritious food through weekly youth clubs and **"Caring Meals"** for families. Alongside food provision, the school's Monthly Marketplace has become an important community space, helping to strengthen social connections and create opportunities for local involvement.

This work supports families experiencing food insecurity and helps reduce pressure on parents and caregivers. Staff have observed that children who receive regular meals are better able to engage in school activities and participate in learning. Our commitment reflects how sustained support for families can contribute to stronger, more resilient communities over time.

660,977

MEALS DELIVERED WITH THE FELIX PROJECT TO CHILDREN AND FAMILIES LIVING IN BOROUGH WITH THE HIGHEST LEVELS OF DEPRIVATION

7,856 CARING MEALS

SUPPLIED TO VULNERABLE CHILDREN AND FAMILIES YEAR ROUND THROUGH OUR PARTNERSHIP WITH SURREY SQUARE PRIMARY SCHOOL

93%

OF PARENTS AT SURREY SQUARE PRIMARY SCHOOL SAID THE CARING MEALS SUPPORT MADE IT EASIER TO ENSURE THEIR CHILDREN WERE WELL NOURISHED



”

*The 'Caring Meals' service has been a huge help. With everything being so expensive, it's a relief to know that we have one less meal to worry about each week. It's more than just food; it's peace of mind.*

Parent of two children from Surrey Square Primary School

## OUR WORK IN CHILD POVERTY IN THE UK

### SUCCESS CLUB

Through our partnership with **Success Club**, a community-based organisation supporting low-income families, The Caring Family Foundation has driven the Cook and Connect programme, in the London borough of Enfield to develop the skills needed to prepare nutritious, cost-effective meals.

In 2025, this programme supported parents and children to learn new recipes, while providing **1,100 meals** through shared sessions, take-home portions, and fresh ingredients for home cooking.

Alongside practical skills such as batch cooking and budget management, our support also includes activities focused on wellbeing, including mindfulness and sensory-based sessions.

These sessions provide a vital space for parents to strengthen relationships with their children and reduce social isolation. By providing the tools to manage long-term food security, the Foundation is helping to build resilient households where healthy eating is both creative and sustainable.

### SHINING STARS

Through our engagement with **Shining Stars**, a community organisation supporting young people facing social and economic disadvantage, we help children and young people at risk of food insecurity by providing consistent access to nutritious meals.

In 2025, our grant supported the delivery of **2,560 healthy meals** as part of a four-day-a-week after-school programme.

Operating during term time, the programme also provided a safe and supportive environment for children who may not be able to return home immediately after school, including those affected by parental work commitments or limited access to safe spaces.

# 100%

OF PARTICIPATING FAMILIES  
GAINED THE SKILLS TO  
PREPARE NUTRITIOUS,  
AFFORDABLE MEALS,  
TRANSFORMING COOKING  
FROM A SOURCE OF STRESS  
INTO A MOMENT OF CHILD-  
INCLUSIVE CONNECTION

# 2,560

HEALTHY MEALS  
PROVIDED TO CHILDREN  
THROUGH OUR  
PARTNERSHIP WITH  
SHINING STARS



### HOME START CAMDEN & ISLINGTON

Our partnership with **Home-Start Camden & Islington** supports families experiencing complex challenges, including temporary housing, domestic abuse, and social isolation.

In 2025, we facilitated the provision of **over 6,300 nutritious meals and launched Home-Start's first direct food provision for families**. Beyond addressing immediate needs, we supported parents through workshops on fuel poverty and budget-friendly cooking, providing a sustainable alternative to low-cost processed food and ensuring nutrition remains a priority in difficult times.

Our latest grant is a direct response to the vulnerability of **holiday hunger**, where the absence of school meals leaves thousands of children at risk of food insecurity. By funding the expansion of food bank services throughout the holiday periods, we ensure that families have a reliable, local source of nutrition when they need it most. Through this targeted support, we bridge the gap in school-term provision, providing a consistent safety net for families across London.

”

*We've seen hundreds of families accessing these services that have been provided from The Caring Family Foundation, and these are people that would otherwise be going hungry. We see about 40% of our children living in poverty in Camden and Islington. Without this, there'd been many, many more families going hungry.*

Ciara Jeffries, Home Start CEO

# 6,300

MEALS PROVIDED TO  
FAMILIES, BRIDGING  
THE CRITICAL GAP  
IN SCHOOL-TERM PROVISION  
FOR LONDON'S MOST  
VULNERABLE CHILDREN



## OUR WORK IN CHILD POVERTY IN BRAZIL

### INSTITUTO LIA ESPERANÇA

In 2025, the partnership between The Caring Family Foundation and the **Instituto Lia Esperança** helped ensure that children and families had consistent access to nutritious meals. Located in the outskirts of São Paulo, the community has limited access to basic services and stable income meaning, that many families face daily challenges in securing enough healthy food.

Throughout the year, we provide free meals for school-aged children and their families. This year, we served **55,122 meal boxes** supporting hundreds of children to arrive at school nourished, able to focus, to learn and to play. At the heart of **Instituto Lia Esperança's** work is the daily provision of meals. Our support makes it possible, helping to create the stability that allows their wider community work to grow.

With a focus on sustainability, we supported the restructuring of the community kitchen, including renovating the space and upgrading the equipment, resulting in improved working conditions, greater operational efficiency, safer working space and increased meal production capacity.

In parallel, the maintenance of the community vegetable garden strengthened access to fresh and healthy food, promoted autonomy and collective care, and provided additional support to women and families within the community, extending the impact beyond immediate food assistance. By connecting the garden and the kitchen, we are supporting solutions that grow from within, helping to address child poverty in a way that is sustainable and community-led.



”

*Hello, my name is Eveline. I am 35 years old, a mother of four children, and I have been living in this community for just over a year. My children receive meals every day, and I am deeply grateful for them. They have helped us a great deal at home during a time of tight finances and have truly made a difference in our lives.*

*My children enjoy the food very much. It is always fresh, with that homemade, motherly flavour and comforting seasoning. And it's not just in my home; I also see how many other families benefit from these meals. You can see it in the eyes of each child when they open their meal box and find their food inside. The joy with which they receive that meal is so clear.*

*For this reason, I would like to thank all the contributors including The Caring Family Foundation. My sincere thanks to everyone.*

**Eveline**  
Resident of Vila Nova Esperança



## CHILD POVERTY

### 2025 DEFINING MOMENT

In May, to mark World Hunger Day, The Caring Family Foundation funded the delivery of **one million meals** across London in partnership with **The Felix Project**. This investment enabled the efficient distribution of food at a cost of 33p per meal, reaching over **53,000 people across 100 communities**.

This milestone contributes to our wider impact, with **over 3.8 million meals delivered** across the UK and Brazil to date.

A key part of this delivery has been the introduction of two co-branded vans, funded by the Foundation. In their first four months, these vehicles rescued over **215 tonnes of surplus food, saving 610kg of CO2e from entering the atmosphere, ensuring that high-quality nutrition reaches youth clubs and schools while actively reducing our environmental footprint**.

Alongside food provision, this work helps alleviate financial pressure on families, enabling limited resources to be redirected towards other essential needs. It also supports community-based programmes that strengthen local connections and provide access to practical support in settings such as youth clubs, community centres and schools.

We believe this milestone reflects the importance of sustained, practical investment in addressing food insecurity and empowering families. Because this work is not only about feeding families today, but about building a more responsive and sustainable food system - one that reduces waste, supports communities, and ensures that children and families can access the nutrition they need to live, learn, and thrive.



”

*The Felix Project is London's largest food redistribution organisation, delivering food to community organisations, charities, and primary schools across the city. The Caring Family Foundation has been helping The Felix Project to deliver nutritious food to communities in need since 2020. In the last year, our partnership with The Caring Family Foundation has allowed us to focus on getting more food to children and families, and their support meant that we were able to rescue and deliver enough food for over one million meals in 2025.*

*It's a privilege to work with a partner like The Caring Family Foundation who care as much as we do about children and their families accessing good, nutritious food, and we're incredibly grateful for their continued support for our work.*

**Charlotte Hill**  
The Felix Project CEO



# REFORESTATION & RESTORATION

## CARING FOR THE AMAZON

We believe that protecting the Amazon is a moral and environmental necessity, requiring a strategic commitment to caring for both the ecosystem and the Indigenous communities who serve as its primary guardians.

The ongoing loss of forest continues to place pressure on ecosystems and the people who rely on them. Our approach is grounded in the belief that environmental restoration must go hand in hand with supporting Indigenous and local communities to protect their land, livelihoods, and way of life.

In 2025, The Caring Family Foundation facilitated every stage of the restoration cycle - from seed collection and seedling production to large-scale planting and long-term stewardship. Through our partnerships with SOS Amazônia and Ecoporé, we have anchored community-led agroforestry systems, training families in sustainable agriculture and bioeconomy practices. These interventions have restored hundreds of hectares, while simultaneously driving local food security and economic autonomy.

We also recognise that healthy forests depend on healthy communities. Through our partnership with **Associação Médicos da Floresta (Doctors of the Forest)**, we supported access to essential healthcare for remote Indigenous communities. This included medical expeditions and the introduction of a mobile medical unit, helping to strengthen community wellbeing and support environmental stewardship.

For us, this is not just about planting trees: it is about providing the tangible support that allows both nature and people to thrive in harmony so that life can continue to grow and flourish.

[18] MapBiomas (2025), Land use and land cover in Brazil

[19] The Caring Family Foundation (2025), Echoes of Care: Pirahã Indigenous Land

[20] WWF (2025), The Amazon Is Losing the Match, based on MapBiomas data

[21] Scientific evidence shows Indigenous territories are among the most effective models for forest protection

(Monitoring of the Andean Amazon Project (MAAP), Protected areas and Indigenous territories reduce deforestation rates; Rainforest Foundation (2024), Scientific evidence on Indigenous forest management).

IN ONLY FOUR DECADES

**52M**  
HECTARES

OF THE AMAZON'S  
NATIVE VEGETATION  
DISAPPEARED, A LOSS  
EQUAL IN SCALE TO THE  
ENTIRE LANDMASS OF  
FRANCE [18]

**800%**

INCREASE IN  
DEFORESTATION OF THE  
ANCESTRAL TERRITORY OF  
THE PIRAHÃ INDIGENOUS  
LAND IN LESS THAN 25 YEARS.

WE WORK ALONGSIDE THE  
PIRAHÃ COMMUNITY TO  
HELP THEM PROTECT  
THEIR LAND [19]

AN AREA EQUIVALENT TO  
**6 FOOTBALL PITCHES**

IS CUT DOWN  
**EVERY SINGLE MINUTE**  
ACROSS THE AMAZON BIOME [20]

PROTECTING INDIGENOUS PEOPLES AND THEIR TERRITORIES  
IS ONE OF THE MOST EFFECTIVE WAYS TO SAFEGUARD THE  
AMAZON, AS INDIGENOUS-MANAGED FORESTS CONSISTENTLY  
SHOW LOWER DEFORESTATION RATES. [21]

# OUR IMPACT IN THE AMAZON RAINFOREST

## OUR IMPACT IN 2025



**2,315,715**  
trees and seedlings planted



**218**  
seed collectors trained

## OUR IMPACT TO DATE

**£3.7M**

IN PROJECT FUNDS AND  
GRANTS TO ORGANISATIONS  
REFORESTING AND RESTORING  
THE AMAZON RAINFOREST



**4,784**  
Indigenous people supported  
through reforestation and  
healthcare projects

**1,850**

hectares of the Amazon rainforest  
restored, equivalent to over  
2,650 football pitches



**5,796,795**  
trees and seedlings planted



## OUR WORK ACROSS RESTORATION AND REFORESTATION

### SOS AMAZÔNIA

In 2025, we worked closely with **SOS Amazônia**, supporting both forest restoration and the communities who depend on it. The work expands across 13 municipalities and 2 states in the Amazon region, including the Nukini and Puyanawa Indigenous lands.

Together, we supported seedling production, land restoration, and the development of sustainable agricultural systems, working alongside Indigenous, riverside, and rural communities to restore degraded land.

This work goes beyond reforestation. It supports communities to strengthen their capacity to manage and sustain their territories, contributing to food security, livelihoods, and long-term environmental stewardship.

In 2025, this included the production and distribution of over **255,000 seedlings** and the ongoing restoration of **262 hectares** through Agroforestry Systems (SAFs) - a sustainable approach that integrates trees with food crops to reflect natural forest ecosystems.

### OUR IMPACT IN 2025

**262**  
**HECTARES**

RESTORED OR BEING  
PREPARED FOR  
RESTORATION,  
THE EQUIVALENT OF  
490 FOOTBALL PITCHES

**305,500**

TREES PLANTED

**255,215**

SEEDLINGS PLANTED OR PRODUCED  
FOR REFORESTATION



”

*All this area here [...] was just open land, just a lot of grass. There was nothing here in this place [...] Today it is already showing this whole transformation of the place. The family keeps growing. Not only the human family, but the family of other beings as well. When the flowers begin to appear, the bees and the hummingbirds arrive. Then the birds begin to come, and other animals as well. [...] I want to thank everyone who is supporting this project. It is very important for us and for our territory.*

Vari, Puyanawa leader

## OUR WORK ACROSS RESTORATION AND REFORESTATION

### ECOPORE

In 2025, The Caring Family Foundation expanded our partnership with **Ecoporé** through the **Regenera Project**, an initiative supporting Indigenous leadership in ecological restoration. By combining large-scale reforestation with bioeconomy activities, this work supports both forest conservation and community-led economic development.

A key focus of the programme is strengthening participation across communities, including women's leadership. In 2025, this included **942 Indigenous engagements across six territories**, with **485 women participating** in programme activities.

Restoration efforts also expanded, with planting across **200 hectares** in the Pacaás Novos, Sete de Setembro, and Caititu territories. Seed production reached **51.03 tonnes of native seeds**, purchased from Indigenous collectors, generating over **£340,000 in income** for participating communities. This model supports a circular approach, where restoration activities also contribute to local livelihoods.

Alongside this, to date we have supported **523 seed collectors** and **eight bioeconomy businesses**, including Paiter Honey and Café Sarikab, led by women and young entrepreneurs. In addition, **90% of newly trained Indigenous communicators are women**, helping to strengthen local representation and communication across territories.

The **Regenera Project** demonstrates how restoration, when led by local communities, can support both environmental sustainability and long-term economic resilience.

### OUR IMPACT IN 2025

**51**  
**TONNES**  
OF SEEDS COLLECTED  
TO SUPPORT  
REFORESTATION

**942**  
INDIGENOUS PARTICIPANTS  
ENGAGED ACROSS PARTNER  
TERRITORIES

**£340,000**  
IN DIRECT INCOME TO COMMUNITIES  
THROUGH SEED PURCHASES



*“The sale of these seeds, including cover crop species used in the planting of the first area, provided a new source of direct income for families, enabling tangible improvements in their living conditions (...) The entire project cycle, from technical training for seed collection and processing to planting, is crucial, as it recovers and values Indigenous traditional knowledge about their land. This process not only ensures the quality and effectiveness of the environmental restoration of the 66 hectares, but also strengthens community autonomy, leadership, and cultural appreciation, proving that forest conservation is a viable path for the well-being and future of new generations.*”

**Paulo Bonavigo**  
Executive Director of Ecoporé

## A GUARDIANS VOICE

Through hands-on guidance, training, and community collaboration, restoration has become a shared journey - rooted in the land, led by local voices, and sustained by collective commitment. By investing in these communities, we are ensuring that both people and forests can flourish together for generations to come.

”

*I have always supported it and continue to support it, because it has helped a lot to reduce deforestation, especially today when we see so many fires. This affects us adults, the children, and the animals. The coolness of the forest is very good for us, for our health, for children's health, and even for animals. Seeing animals dead on the news makes us very sad. Even at home we feel uncomfortable with this intense heat that comes from deforestation. That's why I strongly support tree planting. It's something I pray for every day, so the project can move forward, because it means health for us and for everyone who lives on this land.*

**María Antonieta**  
Carlota Community



”

*We are working on a reforestation project to restore this area so that the water is not lost and can return to how it was before. We are planting more trees because, in the future, this will help improve the lives of all of us, our children, great-grandchildren, and the entire community. In the end, we are the ones who will benefit from all of this.*

**Elane da Silva Rocha Barbosa**  
Carlota Community

## HEALTHCARE

### ASSOCIAÇÃO MÉDICOS DA FLORESTA

We believe that forest protection and Indigenous well-being are inseparable. Together with **The Associação Médicos da Floresta (AMDAF)**, we operate in remote areas of the Amazon, providing specialised medical care to Indigenous communities living in isolated territories.

For them, caring for health means caring for the forest: their source of food, medicine and identity. Disease is not only a physical imbalance but a disruption of the relationship with the land and the spirits that inhabit it. That's why protecting the forest and accessing healthcare is intertwined. As shared by the Indigenous leader **Akadjurichã Ka'apor**:

*"Without the forest, we can't live. The forest is our mother."*

This project was designed to address historical challenges that limit access to Indigenous healthcare in Brazil, particularly in the Amazon region. Through our partnership, we support a network of volunteer medical professionals delivering a range of services, including women's health, paediatrics, general medicine, dentistry, and preventative care directly within communities. **The medical expeditions combine modern medicine with Indigenous health specialists, creating a bridge that allows trust, healing and ethical care.**

This work helps improve access to essential healthcare in areas where services are often very limited. Working closely with Indigenous communities, we also learned that Indigenous women are central agents of change. When women understand and trust medical interventions, they lead others to care - bringing children, accepting preventive exams, and encouraging collective participation.

**By listening to the voices of the forest, we contribute to an intercultural transformation that restores medicine to its most essential purpose: the act of caring with humanity.**

*"If the medicine is not available, the Indigenous person has to pay for it themselves or they go without treatment. We have Indigenous people here who have been waiting three years for care - with no expectation of when they would be seen. And now they are being treated here. "We cannot do this alone. We have many limitations and in these moments, we need support like yours. That shows the importance of this partnership."*

Pinar

Indigenous leader from Tembê and Indigenous health regional advisor

## MEDICAL BUS

In 2025, we piloted the launch of a ground-breaking new model: a **Mobile Clinic Bus**. This first of its kind service expanded access to specialist and culturally appropriate healthcare for Indigenous communities in remote areas of the Amazon.

The Mobile Clinic Bus and the medical expeditions represent a meeting of worlds - **that of science and that of the forest, of technique and of tradition**. For many, the visit of medical teams marked the first time a doctor entered their community. This presence has deep symbolic meaning as it reverses a history of abandonment and invisibility.

Through a series of medical expeditions, the mobile unit delivers care and diagnostic services directly within communities, supporting earlier intervention and improving access to treatment. The bus has been particularly critical for pregnant women, many of whom had limited access to routine antenatal care and were not receiving the recommended level of screening because of the logistical and cultural challenges they face to access healthcare in an urban setting.

For these women, receiving prenatal care in their village, with welcoming guidance and access to examinations, was a significant change, offering immediate support while reducing insecurity and maternal-infant health risks.

### FOCUS ON INDIGENOUS COMMUNITIES



3,527

Indigenous people directly benefitted in total

6,872

services provided, including consultations and exams



3,100 KM

travelled by medical teams across rivers and roads - roughly the distance from London to Athens - to reach remote Indigenous communities

37

different Indigenous communities reached



## REFORESTATION & RESTORATION

### 2025 DEFINING MOMENT

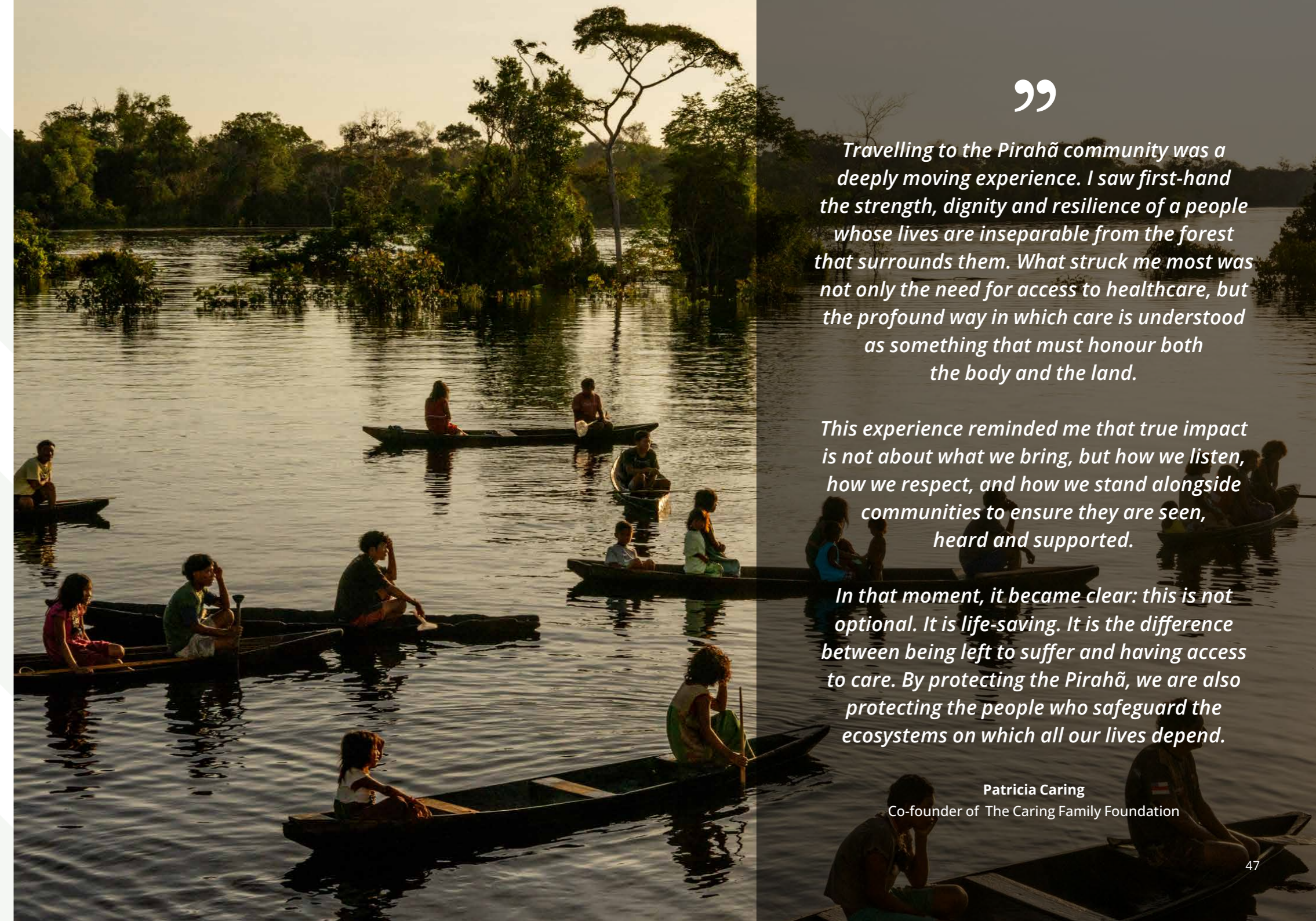
In January 2025, The Caring Family Foundation travelled to a remote area of the Amazon on a mission to deliver healthcare to the **Pirahã Indigenous people** whose relationship with **territory, care, and the forest reveals unique ways of living and resisting in the Amazon**. The Pirahã are among Brazil's most isolated Indigenous communities, maintaining a way of life closely connected to the river and surrounding environment. The vast majority of the Pirahã do not speak Portuguese, instead they are only the remaining speakers of the Mura language family.

Reaching the territory required travel across 6,846 km by air and river, including over 55 hours by boat. This reflects the challenges of delivering specialist healthcare to communities in remote regions of the Amazon.

Working alongside our partner, **Associação Médicos da Floresta**, the team delivered **310 consultations, supporting 184 children and 126 adults** across the Maici River region. This included **47 malaria tests** and the **identification of 18 cases of trachoma, as well as helping address critical healthcare needs often inaccessible through local services**. From treating parasitic infections and anemia to managing rare conditions and pregnancy complications, this expedition brought essential care directly to those who need it most.

Alongside medical care, the visit responded to requests from community leaders, providing practical items such as fishing equipment and materials to support daily life. This approach reflects our commitment to working in partnership with communities and respecting their autonomy.

This work contributes to improving access to healthcare in remote areas and supports longer-term engagement with communities across the region.



”

*Travelling to the Pirahã community was a deeply moving experience. I saw first-hand the strength, dignity and resilience of a people whose lives are inseparable from the forest that surrounds them. What struck me most was not only the need for access to healthcare, but the profound way in which care is understood as something that must honour both the body and the land.*

*This experience reminded me that true impact is not about what we bring, but how we listen, how we respect, and how we stand alongside communities to ensure they are seen, heard and supported.*

*In that moment, it became clear: this is not optional. It is life-saving. It is the difference between being left to suffer and having access to care. By protecting the Pirahã, we are also protecting the people who safeguard the ecosystems on which all our lives depend.*

**Patricia Caring**  
Co-founder of The Caring Family Foundation

## INTERNATIONAL WOMEN'S DAY

In celebration of **International Women's Day**, The Caring Family Foundation hosted a breakfast at **Annabel's**, centred on the 2025 theme, **#AccelerateAction**.

Featuring **Emma Dabiri**, **Victoria Prew**, **Dr. Sabrina Cohen-Hatton**, and **Phoebe Schecter**, the discussion explored the role of collective action in addressing inequality and breaking down barriers.

Alongside a performance by **Nectar Woode**, the event brought together voices from across sectors to share perspectives, build connections, and reinforce a shared commitment to advancing gender equality



## ANNABEL'S FOR THE AMAZON

On Friday 19th September, The Caring Family Foundation hosted its second **annual Annabel's for the Amazon gala**, marking the culmination of a month-long campaign focused on protecting the Amazon rainforest.

Launched on **World Amazon Day**, the campaign helped raise awareness of the importance of long-term environmental conservation. The evening, co-hosted by **Rory Bremner** and featuring a performance by **Ronan Keating**, brought together a community of supporters and raised **£2.4 million**.

These funds will support the Foundation's ongoing work in the Amazon, including reforestation, access to healthcare, and community-led initiatives that strengthen environmental stewardship in the long term.

## A FESTIVE WONDERLAND AT THE DORCHESTER

On Sunday 24th November, The Caring Family Foundation, together with **The Birley Clubs**, hosted the second annual **Festive Wonderland at The Dorchester**.

The event brought together families for a seasonal celebration, with the space designed to create an engaging and memorable experience for children.

With 100% of ticket proceeds supporting our **Food from the Heart** campaign, the event also encouraged guests to donate gifts for families in need. These contributions ensured that every child at **Surrey Square Primary School** received a gift during the festive period.

The event reflects a collective effort to support families and create moments of joy, while contributing to the Foundation's wider work addressing food insecurity.



## A FESTIVE WONDERLAND AT SURREY SQUARE PRIMARY SCHOOL

On Thursday 4th December, The Caring Family Foundation hosted its fifth annual festive celebration at **Surrey Square Primary School**, bringing together **436 children** for a shared seasonal event.

Supported by volunteers from **Bill's** and **The Birley Clubs**, students enjoyed a nutritious three-course meal alongside a programme of activities, including crafts and entertainment. The day concluded with every child receiving a gift, helping to ensure they felt included and supported during the festive period.

The event reflects the Foundation's ongoing commitment to working closely with schools and communities, particularly at times of year that can place additional pressure on families. As Co-Head Teacher Matt Morden shared, *"This partnership provides a vital moment of joy at what can be a challenging time of year for many families."*



WITH TREMENDOUS GRATITUDE TO OUR PARTNERS, SUPPORTERS AND DONORS

everyone's invited



# THANK YOU

Your support makes all the difference.

THE  
CARING   
FAMILY  
FOUNDATION

Get in touch via [info@thecaringff.org](mailto:info@thecaringff.org)